

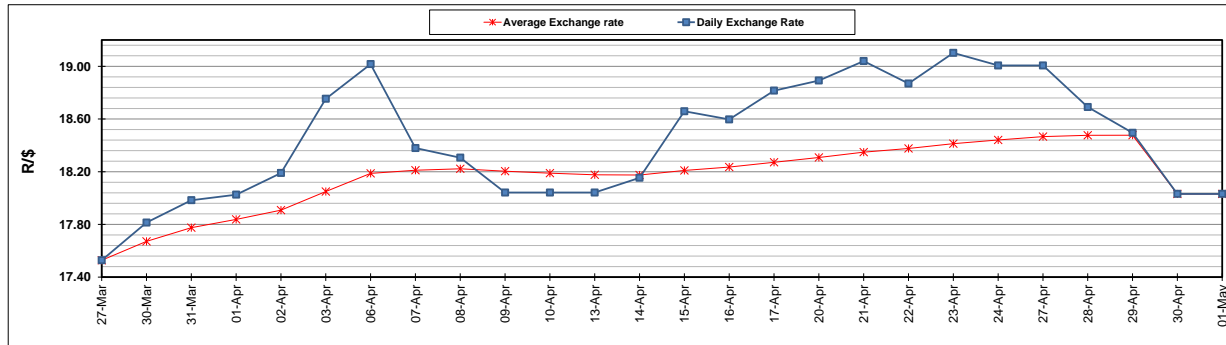
	PETROL 95 ULP	PETROL 93 ULP & LRP	DIESEL 0.05%	DIESEL 0.005%	ILL. PAR.
GAUTENG PUMP PRICE (SA c/l) AS FROM 06/05/2020	1,222.000	1,202.000	-	-	-
WHOLESALE PRICE (SA c/l) AS FROM 06/05/2020	-	-	1,108.560	1,117.960	449.828
SINGLE NATIONAL MAXIMUM RETAIL PRICE	-	-	-	-	543.000
BASIC FUEL PRICE - 01/05/2020 (SA c/l)	324.583	312.528	305.897	311.842	180.347
PRESS RELEASE CONTRIBUTION TO BFP 30/04/2020 - 01/05/2020 (SA c/l)	448.770	438.770	518.630	523.030	468.128
UNIT OVER/(UNDER) RECOVERY - 01/05/2020 (SA c/l)	124.187	126.242	212.733	211.188	287.781
AVERAGE BASIC FUEL PRICE 30/04/2020 - 01/05/2020	321.081	309.016	308.257	314.457	179.771
AVERAGE UNIT OVER/(UNDER) RECOVERY 30/04/2020 - 01/05/2020	127.689	129.754	210.373	208.573	288.357

### ANALYSIS MOVEMENT OF AVERAGE OVER/(UNDER) RECOVERY

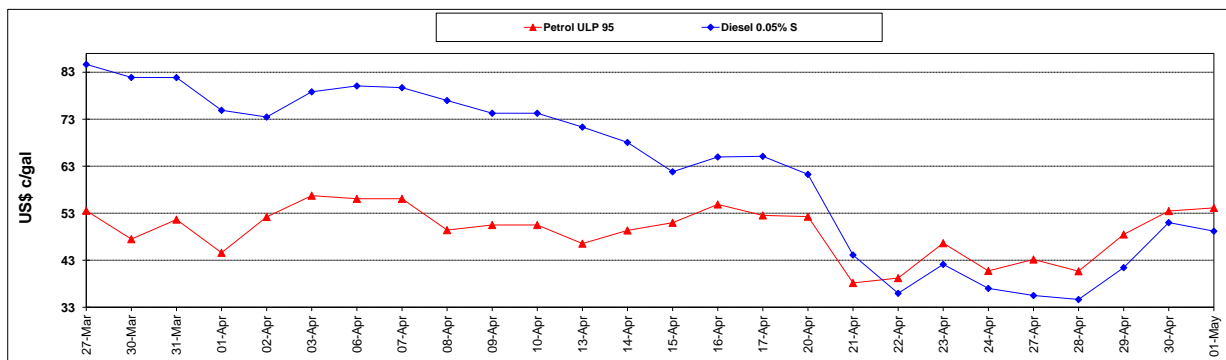
	PETROL 95	PETROL 93	DIESEL 0.05%	DIESEL 0.005%	ILL. PAR.
- MOVEMENT IN INTERNATIONAL PRODUCT PRICES	119.753	122.116	202.754	200.800	283.913
- MOVEMENT IN EXCHANGE RATE	7.936	7.638	7.619	7.773	4.444
AVERAGE UNIT OVER/(UNDER) RECOVERY 30/04/2020 - 01/05/2020	127.689	129.754	210.373	208.573	288.357

### R/\$ EXCHANGE RATE - (R/\$18.0314 - 01/05/2020)

#### EXCHANGE RATE USED IN BASIC FUEL PRICE



#### INTERNATIONAL PRODUCT PRICES OF BASKET USED IN BASIC FUEL PRICE



#### BASIC FUEL PRICE IN SA CENTS PER LITRE

